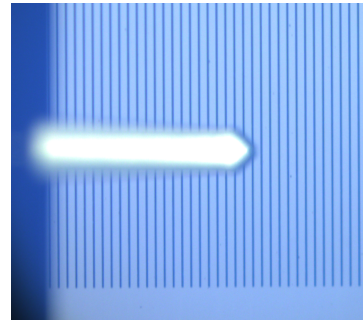
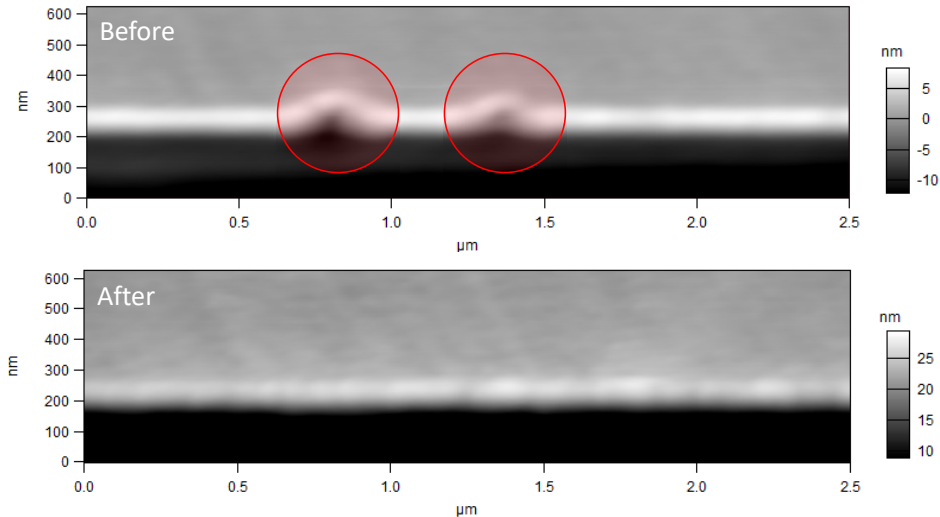




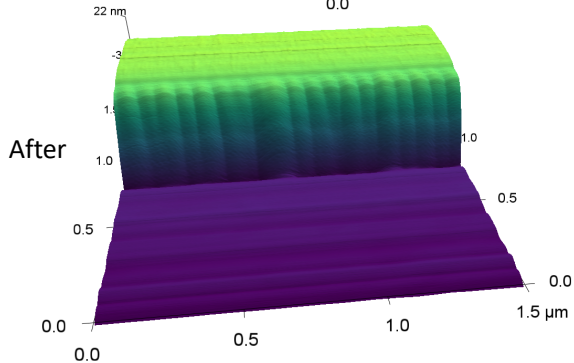
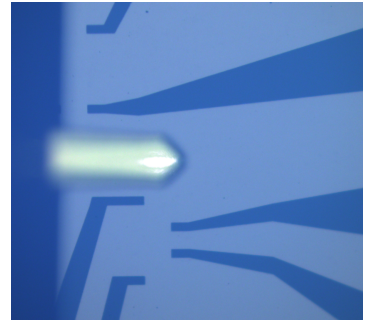
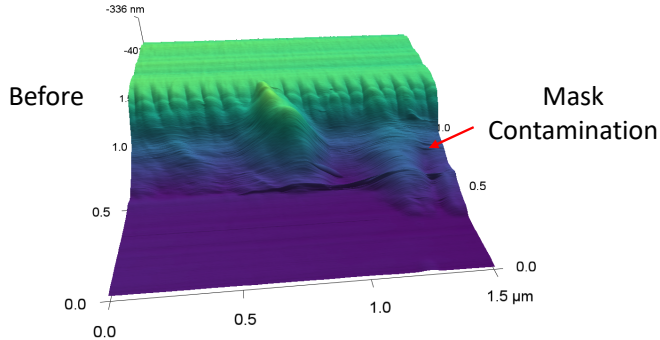
Adama
innovations

Photomask Repair – Defect Repair



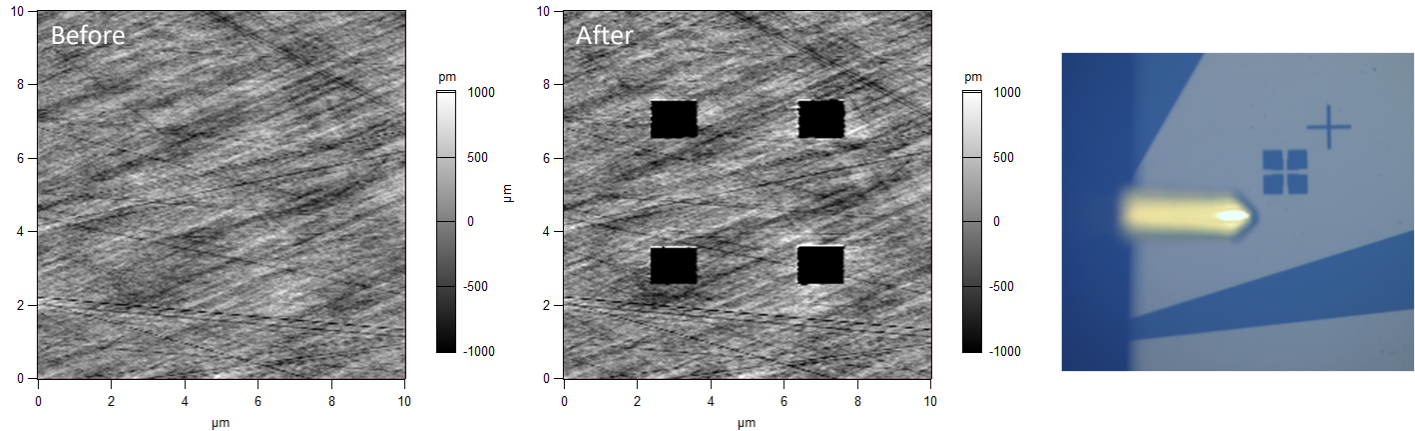
Repair of two photomask edge defects by machining the edge with a sharp robust diamond probe. Acquired using an Asylum Research Cypher-S AFM using an Adama Innovations Photo Mask probe.

Photomask Repair – Cleaning



Cleaning of a photomask using a sharp robust diamond probe. A significant amount of debris is removed from the surface without damaging the photomask. Acquired using an Asylum Research Cypher-S AFM using an Adama Innovations Photo Mask probe.

Photomask Repair – Writing



Writing new photomask features using a sharp robust diamond probe. Here four new features are cut into the chrome of the photomask. Acquired using an Asylum Research Cypher-S AFM using an Adama Innovations Photo Mask probe.