

Tomocube HT-X1

High-Performance Holotomography for Imaging at Scale

Features

- High resolution, high contrast, and high sensitivity
- Large captured fields
- Programmable multi-well plate imaging
- Laser autofocus for well-to-well reproducibility
- Low noise, speckle-free imaging with no calibration step
- Bioimaging made quantitative
- Integrated incubation for long term time lapse
- Integrated 5 channel FL light engine
- Correlative holotomography with 3D fluorescence
- True multi-dimensional imaging across time, space and modality



Tomocube

Tel +82-42-863-1100
info@tomocube.com
www.tomocube.com

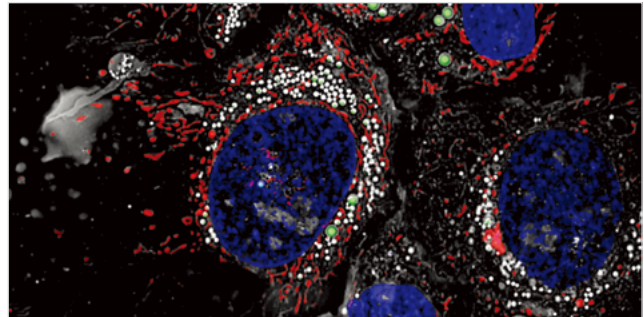
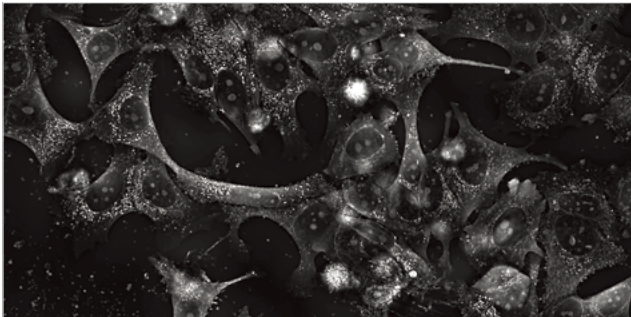
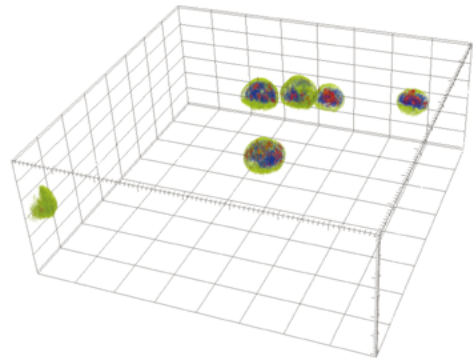


From 3D to Multi-Dimension in Time and Space

True **3D RI measurement** for correlative imaging and image rendering. See the structures you want in 3D. XYZT combined with correlative fluorescence and more.

High NA objective lens to maximise resolution as well as fluorescence efficiency and combined with a 4x larger field of view.

Select the parameters you want for your experiment. XYZ with multi point and multi well, or maybe multi point and tile. Flexibility to do your experiments your way.



Integrated FL light engine with 4 standard channels and an option for filters/LED of your choice, exchangeable to customise for your labels.

Programmable Multi-well Imaging with reliable Infra Red Autofocus, reproducible over time and from well to well. Auto focus where you choose rather than where the software tells you.

Integrated Environmental Chamber for long-term timelapse imaging. Temperature control, CO₂ control and the option of Hypoxia.

Intuitive Software to drive your experiments. Designed with flexibility and efficiency in mind.

1. HT-X1 main unit

- Holotomography illumination
- Detection
- Sample holder
- Environmental chamber
- Positioning stages
- Fluorescence light engine

2. Environmental control unit

- External controller for temperature and gas

3. Software

- TomoStudio X for control of acquisition
- TomoAnalysis for data analysis and report



Distributed by