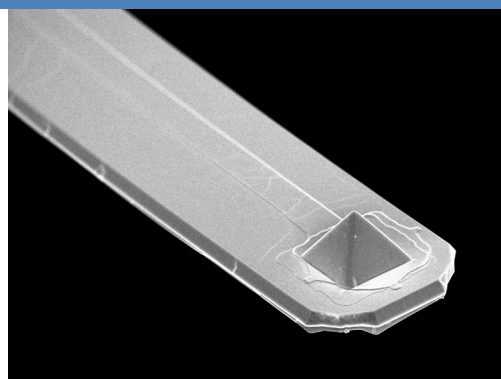


## VertiSense™ Thermal Probes

## DATA SHEET

VertiSense™ Thermal Probes are used for Scanning Thermal Microscopy. These innovative thermal probes can be used to image thermal properties of a sample in either Temperature Mapping or Thermal Conductivity Mapping Modes. The thermocouple sensor is located at the apex of the tip to allow true temperature measurement with ultra high lateral thermal resolution.



### Probe Model: VTP-200

Parameter	Value		
	Nominal	Minimum	Maximum
Spring Constant (N/m)	9.9	3.0	24.9
Frequency (kHz)	107	67	153
Length (µm)	200	190	210
Width (µm)	50	45	55
Thickness (µm)	3.5	2.5	4.5

### Probe Model: VTP-500

Parameter	Value		
	Nominal	Minimum	Maximum
Spring Constant (N/m)	0.63	0.21	1.45
Frequency (kHz)	17	11	23
Length (µm)	500	490	510
Width (µm)	50	45	55
Thickness (µm)	3.5	2.5	4.5

### Ordering Information

There are 5 probes in each box. The probes are mounted for specific AFM models. Brand name and model of AFM is required at the time of ordering.

- VertiSense™ Thermal Probes work only with the AppNano Thermal Imaging Amplifier.
- Probe temperature calibration services are available at an additional cost.



