

Product Information

In application, EPF (Electrical Power Feedthrough) is transmitting high voltage or high current from atmosphere into vacuum chamber.

EPF is the key component for subtract heating device, E-beam evaporator or other devices which need high voltage and current.

The sealing technology is bonding the ceramic based material and metal alloy.

Ceramic is excellent insulation material applied in vacuum electrical power feedthrough.

For different requirement on the voltage and current, we offer metal alloys such as:

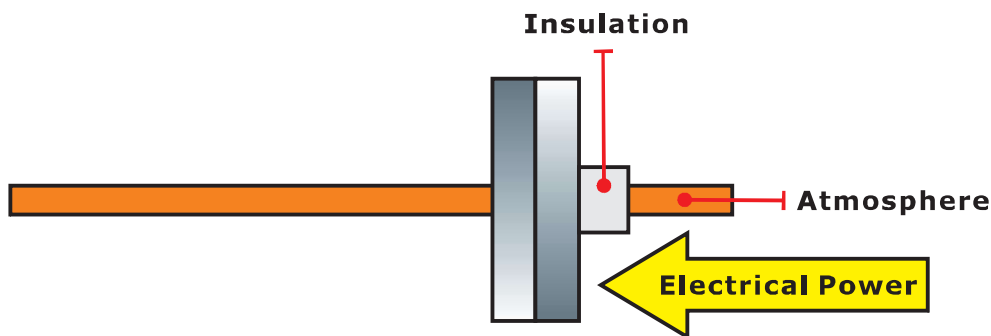
Stainless steel

Copper

Nickle

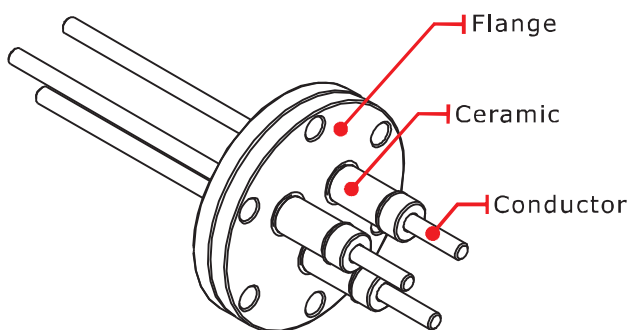
System
Components

Product's Application

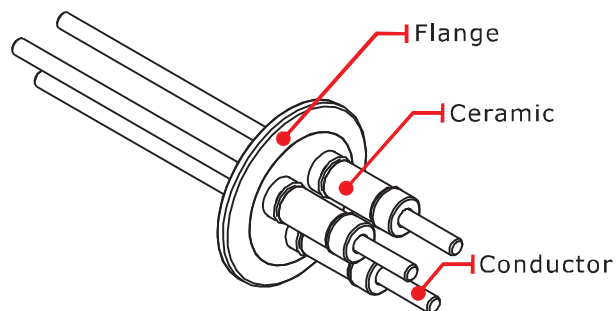


Key Product Parts

Feedthrough- CF Type



Feedthrough- KF Type

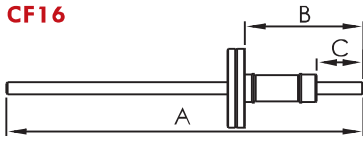
System
Components

Technical Data for Feedthrough

Conductor	SS304	OFHC
Voltage (V)	5000	5000
Current (A)	7	180
Baseplate	SS304	SS304
Insulation	Alumina ceramic	Alumina ceramic
Operate pressure range	760 Torr ~ 1×10^{-8} Torr 1,000 mbar ~ 1.33×10^{-8} mbar 100 kPa ~ 1.13×10^{-9} kPa	760 Torr ~ 1×10^{-8} Torr 1,000 mbar ~ 1.33×10^{-8} mbar 100 kPa ~ 1.13×10^{-9} kPa
Temperature rang	-100°C(-148°F) to 500°C(932°F)	-100°C(-148°F) to 500°C(932°F)
Bake temperature	500°C(932°F)	500°C(932°F)

Product Order Information

CF16



CF35

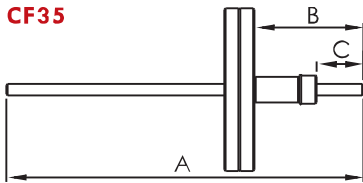


Figure 1

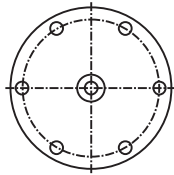


Figure 2

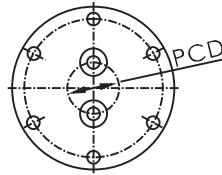


Figure 3

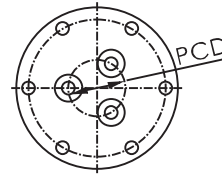
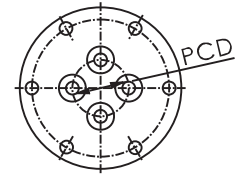


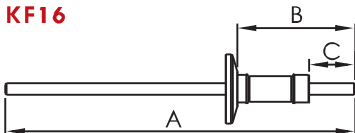
Figure 4



Feedthrough - CF Type

Part Number- OFHC	Part Number- SS	Flange Size	Figure	A	B	C	PCD
FT-CF-133-1-OFHC	FT-CF-133-1-SS	CF16	1	152	51	20	N/A
FT-CF-275-1-OFHC	FT-CF-275-1-SS	CF35	1	152	47	20	N/A
FT-CF-275-2-OFHC	FT-CF-275-2-SS	CF35	2	152	47	20	22
FT-CF-275-3-OFHC	FT-CF-275-3-SS	CF35	3	152	47	20	24
FT-CF-275-4-OFHC	FT-CF-275-4-SS	CF35	4	152	47	20	24

KF16



KF40

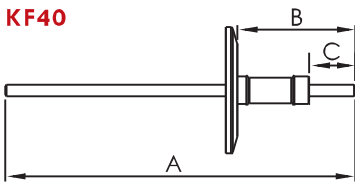


Figure 1



Figure 2

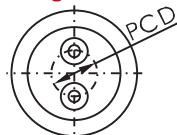


Figure 3

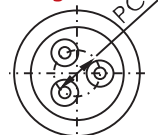
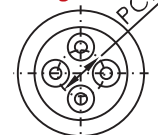


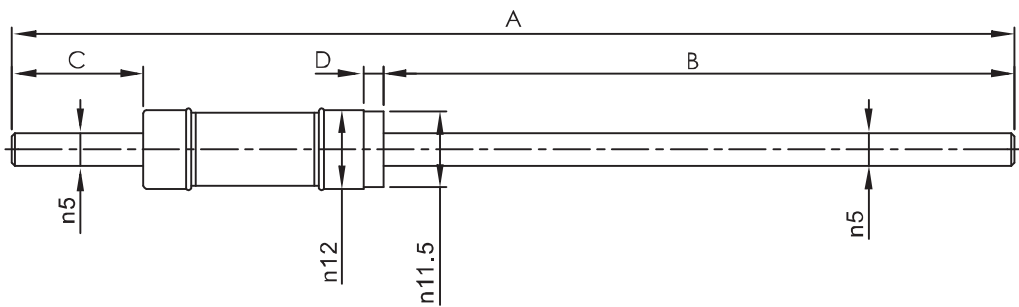
Figure 4



Feedthrough - KF Type

Part Number- OFHC	Part Number- SS	Flange Size	Figure	A	B	C	PCD
FT-KF-16-1-OFHC	FT-KF-16-1-SS	KF16	1	152	52	20	N/A
FT-KF-40-1-OFHC	FT-KF-40-1-SS	KF40	1	152	52	20	N/A
FT-KF-40-2-OFHC	FT-KF-40-2-SS	KF40	2	152	52	20	20
FT-KF-40-3-OFHC	FT-KF-40-3-SS	KF40	3	152	52	20	20
FT-KF-40-4-OFHC	FT-KF-40-4-SS	KF40	4	152	52	20	22

Product Order Information



System
Components

Feedthrough-Single Pin

Part Number- OFHC	Part Number- SS	A	B	C	D
FT-SP-OFHC	FT-SP-SS	152	96	20	3